

NORWOOD PARK



CREMATORIUM AND MEMORIAL GARDENS



WELCOME TO NORWOOD PARK

SINCE 1966, NORWOOD PARK HAS PROVIDED A BEAUTIFUL AND TRANQUIL SETTING FOR MEMORIALS AND CEREMONIES IN THE ACT. THE LANDSCAPED GROUNDS SIT ELEVATED ABOVE CANBERRA AND ARE ONE OF AUSTRALIA'S MOST ESTABLISHED MEMORIAL PARKS.

OUR SERVICES

Norwood Park is a fully-serviced crematorium and memorial park. Ceremonies take place in our indoor and outdoor chapels with the option to have catering afterwards. The gardens situated in our beautiful grounds provide many memorial options.

WHY A MEMORIAL?

Memorials provide a place to visit and focus on the life of a loved one. They are a place to visit during grief, on anniversaries and important dates. Designing a memorial can help to complete the natural process of grieving for many people. A memorial is an important way to express love and respect for a person and to reflect on their life in a lasting and thoughtful way.

CONTACT US

To arrange an appointment, enquire about services or arrange a guided tour of the gardens, **phone 02 6241 3177** or **email us at memorials@norwoodpark.com.au**





CONTENTS

PAGE 4	NORWOOD PARK CHAPEL OUTDOOR CHAPEL CENTENNARY ROOM
PAGE 5	BLUE WREN WAY BUTTERFLY AND GRANITE WALLS
PAGE 6	CASUARINA PARK ROSE GARDEN EAGLE NEST DRY WATER COURSE
PAGE 7	EX SERVICE WALL FAMILY ESTATES HEADLAND MEMORIAL WALK
PAGE 8	LEYLANDII & COCKATOO ROSE GARDENS MAJOR MITCHELL ROSE GARDEN MAPLE AVENUE
PAGE 9	PIONEER WALL POSSUM CORNER ROSELLA WALK
PAGE 10	SERENITY WAY SISTER ELIZABETH KENNY WALL SISTER MARY DE LACY WALL TALL TREES
PAGE 11	TEDDY BEAR GARDEN THE SQUARE REV TYRREL GARDEN TREE OF MEMORIES / SJB
PAGE 12	WATERFALL GARDEN WATERVIEW YAPUNYAH CREEK
PAGE 13	BRONZE MEMORIAL PLAQUES
PAGE 14	URNS AND KEEPSAKES
PAGE 15	FREQUENTLY ASKED QUESTIONS

FACILITIES

NORWOOD PARK CHAPEL

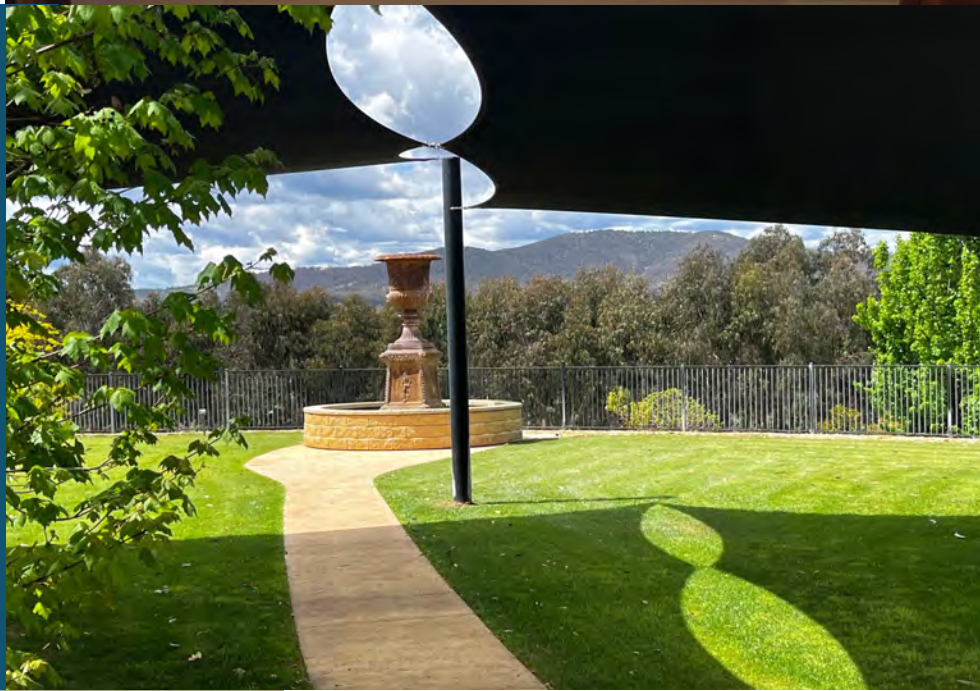
PEACEFUL LIGHT FILLED ROOM
WITH FLOOR TO CEILING WINDOWS
Seats 280 guests

Media/audio visual equipment is supported by a dedicated staff member - including live streaming of services for those unable to attend



OUTDOOR CHAPEL

SPECTACULAR VIEWS OF
MOUNT MAJURA
Seats 150 guests



CENTENARY ROOM

CATERING VENUE

Light refreshments are available in our Centenary Room for after service functions.

Catering is also available for services held in the Outdoor Chapel.

BLUE WREN WAY

PRETTY BLOSSOM TREES IN
SPRING

Memorials available:

SANDSTONE & BUSH ROCKS

Up to four memorial positions

EDGING MEMORIALS

Plaque on the garden edge



BUTTERFLY AND GRANITE WALLS

New granite wall memorials*
have urns placed behind the
plaque

Memorials available:

BUTTERFLY WALL 1

BUTTERFLY WALL 2

BANJO PATERSON WALL

DOROTHEA MACKELLAR WALL

These walls are located in the
garden outside the Chapel.

Niches can be purchased at the
time of need, or reserved as a
pre-need position.

*These walls are designed to
accommodate the entire ashes, unlike
the original walls throughout the
grounds which hold a portion only.





CASUARINA PARK

ROSE GARDEN

Memorials available:

GARDEN EDGE

Single memorial with plaque mounted on the garden edge

DRY WATER COURSE

LOWER SECTION

Memorials available:

GARDEN EDGE Single memorial with plaque mounted on the garden edge

ROCK MEMORIAL

Single or double rock memorials



EAGLE NEST

A ROSE GARDEN WITH LARGE EAGLE SCULPTURE

Memorials available:

GARDEN EDGE Single memorial with plaque mounted on the garden edge

ROCK MEMORIAL

Single or double rock memorials

EX-SERVICE REMEMBRANCE WALL

MEMORIAL WALL FOR THOSE WHO
HAVE SERVED

Memorials available:

WALL SPACE Single niche with
mounted plaque, optional bud vase.
A niche may be reserved for the non-
serving spouse if desired.

**Documentary evidence of Service must be provided*



FAMILY ESTATES

PRESTIGIOUS FAMILY ESTATES WITH
GENEROUS SPACE TO
ACCOMMODATE TWO OR MORE
POSITIONS

Memorials available:

PLINTH POSITIONS alongside our
Outdoor Chapel area.

GRANITE CIRCLES & SANDSTONE
GARDENS near the popular Yapunyah
Creek or Pioneer Walk areas.



HEADLAND MEMORIAL WALK

SITUATED ON THE TOP OF THE HILL
WITH GARDEN AND MOUNTAIN
VIEWS

Memorials available:

SMALL PLINTH single position

DOUBLE PLINTH two positions

GARDEN EDGE Single memorial with
plaque mounted on the garden edge



LEYLANDII, KOOKABURRA AND COCKATOO ROSE GARDENS

A COLOURFUL SELECTION OF
STANDARD AND BUSH ROSES

Memorial Available:

GARDEN EDGE single or double
memorial with plaque mounted
on garden edge



MAJOR MITCHELL ROSE GARDEN

FOR LOVERS OF FRAGRANT AND
COLOURFUL ROSES

Memorials available:

GARDEN EDGE single or double
memorial with plaque mounted on
garden edge



MAPLE AVENUE

AN AVENUE OF BEAUTIFUL MAPLE
TREES PROVIDING SPECTACULAR
AUTUMN COLOUR

Memorials available:

GARDEN ROCK one to four
memorial positions



PIONEER WALL

SET IN ATTRACTIVE GARDENS

Memorials available:

WALL NICHE

Single niche with mounted plaque and vase

FAMILY ESTATES

See page 7



POSSUM CORNER

SECLUDED GARDEN AREA

Memorials available:

BUSH ROCK memorials, as well as edging positions around the garden.

Teddy Bear Garden, our new baby and infant garden is also located in Possum Corner

See page 11



ROSELLA WALK

A WANDERING GARDEN PATH
LINED WITH BOX HEDGE

Memorials available:

SMALL BLACK GRANITE PLINTH

Single position

LARGE BLACK GRANITE PLINTH

Double position



SERENITY WAY

MEMORIAL WALL WITH A
PANORAMIC LAWN VIEW

Memorials available:

WALL NICHE

Single and companion niche
with mounted plaques



SISTERS ELIZABETH KENNY AND MARY DE LACY WALLS

WALL MEMORIALS SITUATED
NEAR THE OFFICE

Memorials available:

WALL SPACE single niche with
mounted plaque, optional bud vase



TALL TREES GARDEN

GARDEN WITH MATURE EUCALYPT
TREES AND NATIVE PLANTS

Memorials available:

GARDEN ROCK

Single or double memorial positions



TEDDY BEAR GARDEN AT POSSUM CORNER

BABY MEMORIAL GARDEN

Memorials available:

GRANITE ELEPHANT WALL niche,
with round plaque. Bronze ash
capsule provided to place ashes
or keepsakes inside the wall.

GARDEN ROCK memorial with
plaque in the Teddy Bear Garden



REV TYRREL GARDENS

WHITE ROSES, COLOURFUL
CORREA & LAVENDER PLANTS,
AND JAPANESE MAPLE TREES

Memorials available:

LARGE PLINTH OR BUSH ROCK

Double memorial positions

GARDEN EDGE

Single memorial with plaque

SCATTER GARDEN - NO PLAQUE

Rose garden for scattering ashes



TREE OF MEMORIES

MEMORIAL TREE SITUATED IN
SIR JOSEPH BANKS WALK

Memorials available:

TREE OF MEMORIES

Leaf plaque displayed mounted
on the wall See page 13

SIR JOSEPH BANKS WALK

SECLUDED NATIVE GARDEN

Peaceful area set aside for the
scattering of ashes





WATERFALL GARDEN

EUROPEAN STYLE GARDEN WITH
LARGE URN AS FOCAL POINT

Memorials available:

DOUBLE PLINTH will accommodate
two memorial positions



WATERVIEW

A SPACIOUS MEMORIAL GARDEN
OFFERING A WATER VIEW

Memorials available:

LARGE GARDEN ROCK
will accommodate up to four
memorial positions

YAPUNYAH CREEK

A TRANQUIL CREEK FEATURING A
PICTURESQUE GARDEN DESIGN

Memorials available:

SHARED GARDEN - ROCK MEMORIAL
Memorials for one or two positions

GARDEN EDGE single memorial with
plaque mounted on garden edge

FAMILY ESTATES - See page 7



BRONZE MEMORIAL PLAQUES

The Norwood Park team offer expert advice on a wide range of bronze plaques suitable for memorials. They can also be used for a loved one at a private location.

GARDEN EDGING

There are various edging plaques used in different locations throughout our grounds.



PLINTH AND ROCK PLAQUES

There is a large selection of plaque designs available for our rock and plinth memorials.



VARIOUS WALL, TREE OF MEMORY AND BABY/INFANT PLAQUES

Wall plaques are different for each wall. Using photos and coloured/shaped plaques make your memorial unique.



URNS AND KEEPSAKES

We have a large display of traditional and contemporary urns, keepsakes and scattering options in our display room. Please see the full catalogue on our website, or come in and speak with one of our Family Service staff who can assist you.

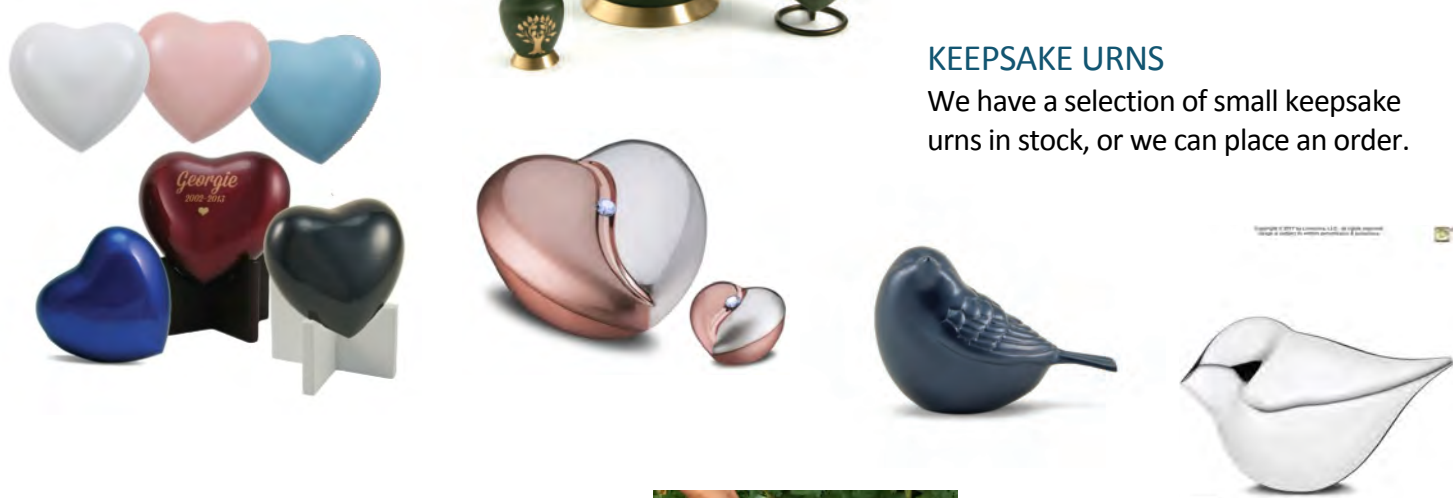
TRADITIONAL URNS

Many of our traditional urns come in a variety of sizes. Some have matching keepsake urns available for separate purchase.



KEEPSAKE URNS

We have a selection of small keepsake urns in stock, or we can place an order.



SCATTERING TUBES & ECO URNS

Scattering tubes of various designs and sizes are available. There are environmentally friendly and innovative choices when it comes to creating a meaningful farewell for your loved one.



FOR LITTLE ONES

We have a selection of urns and keepsakes especially chosen for families who have lost a child.

FREQUENTLY ASKED QUESTIONS

What happens to handles and other fittings on the coffin?

Handles and fittings are removed and discarded as they are not suitable for cremation.

Can I get the handles and fittings back?

Yes, please inform your Funeral Director of your wishes.

What about precious and other metals?

The temperature which a modern cremator operates is between 800°C and 1000°C. Metals are destroyed and have no salvage value. Any metallic material resulting from a cremation is disposed of in accordance with the cremation act.

Can relatives witness the committal of the coffin in to the cremator?

Yes, the necessary arrangements can be made with your Funeral Director.

How can I be assured that I receive the correct ashes?

There is strict protocol in place throughout the cremation process. Each cremation chamber will only accept one coffin. All remains are kept separate at all times.

What happens to the ashes after cremation?

Ashes are placed in an urn, labeled and cared for in a secure area until we receive instructions from the applicant of the cremation.

Is it possible to divide the ashes?

Yes, please notify your Funeral Director or the Norwood Park Office of your wishes.

When can the ashes be collected?

The ashes are available for collection two days after the cremation takes place (excluding weekends). Please note that 24 hours' notice is required before collection, at a time made with our staff.

How long are the ashes held at the crematorium?

Norwood Park cares for the ashes up to twelve months.

What type of urn are the ashes in?

The ashes are provided in a standard industry urn. However, it is possible to purchase an urn, please see the catalogue on our website.

Can the ashes be posted?

Yes, the ashes can be posted within Australia. Ashes cannot be posted overseas.

Can the ashes be scattered on Norwood Park grounds?

Yes, the ashes can be scattered in our Sir Joseph Banks Native Garden, or the Rev Tyrrel Rose Garden. Please call our office to make arrangements.

Do I need to use a Funeral Director?

The best advice would be yes. Funeral Directors provide the necessary documentation required for cremation, coffins, transportation of the deceased and arrangements for the service.

Where can the Funeral Service be held?

The service can take place at Norwood Park's indoor or outdoor chapel. Alternatively there are many other venue options throughout Canberra. Your Funeral Director will be able to provide these options for you.

Can I play media during the Service?

Yes, please visit the media page on our website or discuss with your Funeral Director.

Do you offer any catering or after service functions?

Yes, by booking a service in the Norwood Park Chapel, you may use the Centenary catering room. A minimum of 30 people is required and there are several catering packages available. Please note the Chapel times are linked to the catering room times. For more information on this, or how to book catering, please contact your Funeral Director.

What types of memorials are available?

Norwood Park has a variety of memorial gardens that provide both peace and tranquility. These include scattering of ashes, garden edgings, granite walls, rock memorials and family estates.

Can a memorial be purchased before it is needed?

Yes, memorial reservations can be pre-paid. Please call our office for further information, or to speak to one of our Family Service advisors.

Can a pre-paid cremation be purchased?

Yes, please contact us via email info@norwoodpark.com.au or call our office on (02) 6241 3177 for inquiries.



CONTACT US

Phone: +61 2 6241 3177

Email: memorials@norwoodpark.com.au

Website: www.norwoodpark.com.au

Address: 65 Sandford Street Mitchell ACT 2911

Post: PO Box 663 Mitchell ACT 2911

Office Opening Hours: Monday - Friday 8.30am - 4pm

The grounds are open daily from sunrise to sunset.

